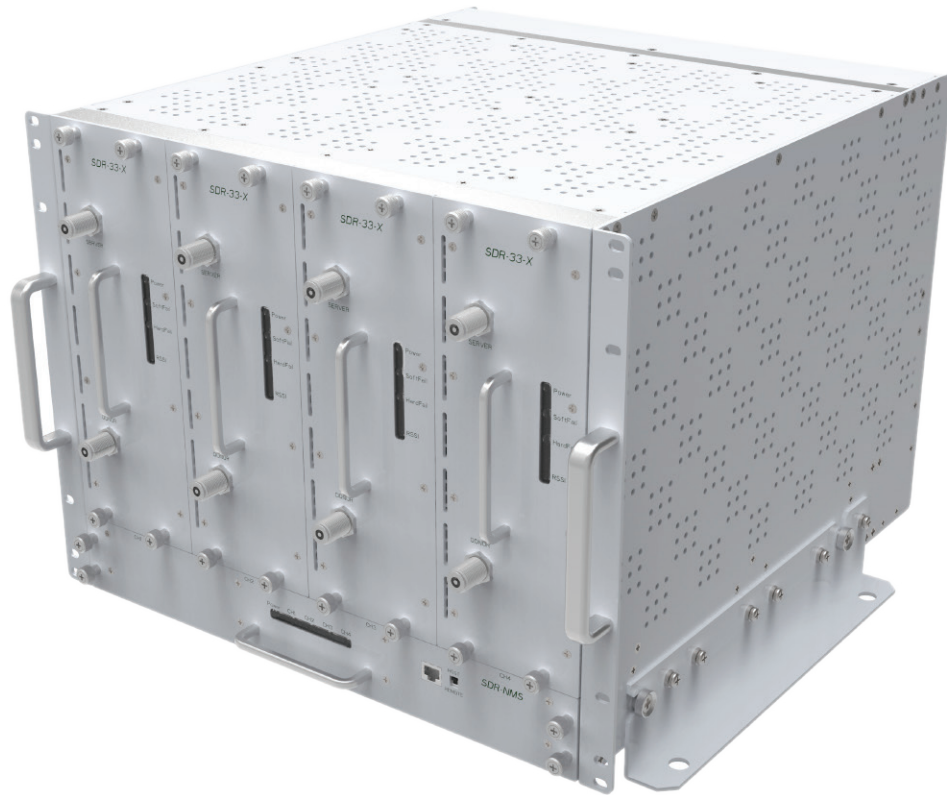


SDR-24/30/33

Software Defined Repeater (with SDR-NMS)

The SDR's modular design and sophisticated digital filtering helps reject adjacent carrier signals, making it the next generation RF repeater solution. The SDR is perfect for venues where voice and data coverage are limited. The user-friendly GUI makes configuring the unit quick and accurate while AGC, oscillation detection, and overload shutdown features help your network maintain the highest levels of performance.

The SDR series also supports both local connection via DHCP or remote connection via external wireless modem, allowing you to monitor your extended network at any time.



Product Features

- Future-proof modular design for maximum flexibility
- Modular structure supports quad-band service in one body
- Supports mixing and matching of various output power levels
- Support for multiple modules using same technology or frequency band
- Hot-swappable modules to minimize downtime
- 80/90/95 dB of max gain and up to 24, 30, or 33 dBm max output power
- Channelized digital filtering with sharp roll-off
- Intuitive and easy to use web-based GUI
- Support for external wireless modem for remote control and alarming
- Optional channel combiner module provides maximum flexibility for donor/server configurations

Product Specifications

SDR-24/30/33 Modular Digital Repeater



Electronic Specifications

		SMR 800/900 SDR-24/30/33-S	600 MHz SDR-30-600	700 MHz SDR-24/30/33-700F	Cell SDR-24/30/33-C	PCS SDR-24/30/33-P	AWS SDR-24/30/33-AF
Frequency	DL:	851 - 869 MHz 935 - 940 MHz	617 - 652 MHz	728 - 757 MHz	869 - 894 MHz	1930 - 1995 MHz	2110 - 2180 MHz
	UL:	806 - 824 MHz 896 - 901 MHz	663 - 698 MHz	698 - 716 MHz 776 - 787 MHz	824 - 849 MHz	1850 - 1915 MHz	1710 - 1755 MHz
Filtering		1-2 Selectable bands in blocks 0.25 -18.00 / 5.00 MHz	1 - 2 selectable bands in blocks of 5/10/15/20.00 MHz	1-2 selectable bands in blocks of 0.25-18.00 MHz	1-2 selectable bands in blocks of 0.25-25.00 MHz	1-3 selectable bands in blocks of 1.25-18.75 MHz	1-3 selectable band of 1.25-18.75 MHz
Gain		80 dB	90 dB	90 / 90 / 95 dB			
Output Power		24 / 30 / 33 dBm	30 dBm	24 / 30 / 33 dBm			
Gain Control Range		30 dB @ 0.5 dB step		40 dB @ 0.5 dB step			
Noise Figure		< 6 dB @ Max Gain		< 5 dB @ Max Gain			
Delay		≤ 8 μs	< 5.0 us	≤ 6 μs	≤ 6.5 μs	5 μs	
VSWR		< 1.5 : 1					
Filter Roll Off		65 dBc @ 500 KHz from sub-band edge		50 dBc @ 1 MHz from sub-band edge			
Power Consumption		< 105 / 110 / 145 W	< 115 W	< 105 / 110 / 145 W		< 85 / 105 / 155 W	

Environmental Specifications

Operating Temperature	14°-122° F (-10°-50° C)
Relative Humidity	5-90% non condensing

Mechanical Specifications

Dimension (W x H x D)	Chassis	19.0 x 14.0 x 19.1 in (482.0 x 356.0 x 485.2 mm)					
	Module	4.2 x 11.6 x 18.2 in (107.3 x 296.0 x 461.8 mm)					
	NMS	17.0 x 2.3 x 16.7 in (430.7 x 59.5 x 423.0 mm)					
Weight	Chassis	26 lbs (11.7 kg)					
	Module	21 lbs (9.5 kg)	24 lbs (10.9 kg)	21 lbs (9.5 kg)			
	NMS	7 lbs (3.2 kg)					
AC Power		110-130V AC, 60 Hz (Default) or 210-240V AC, 60 Hz (Selectable Switch)					
Network Management	Local	RJ45 (Ethernet)					
	Remote	Web-GUI, SNMP, SNMP-Traps (External Wireless Modem Required)					
RF Connector		N-Type Female					
Weather Resistance		IP20					

Product Specifications

SDR-24/30/33 Software Defined Repeater (with SDR-NMS)



Electronic Specifications

		BRS (FDD-LTE) SDR-33-B	BRS (TDD-LTE) SDR-33-BTF	BRS (TDD-LTE) SDR-33-BT
Frequency	DL:	2620 - 2690 MHz	2496 - 2690 MHz	2496 - 2562 / 2502 - 2568 / 2618 - 2684 / 2624 - 2690 MHz
	UL:	2500 - 2570 MHz		
Filtering		1 selectable band of 1.25 - 20.00 MHz	FB1 - 5G: 20 - 100MHz / 4G: 5 - 60MHz + 5 - 20MHz + 5 - 20MHz FB2 - 5G: 20 - 100MHz / 4G: 5 - 60MHz + 5 - 20MHz + 5 - 20MHz FB 1 + FB 2 190MHz	1 - 4 selectable bands in blocks of 1.08 - 30.00 MHz
Gain		95 dB		
Output Power		33 dBm		
Gain Control Range		40 dB @ 0.5 dB step		
Noise Figure		< 5 dB @ Max Gain		
Delay		5 μs	5G @ ≤ 2.4 μs, 4G @ ≤ 3.1 μs	5 μs
VSWR		< 1.5 : 1		
Filter Roll Off		50 dBc @ 1 MHz from sub-band edge	5G: 30 dBc @ 1 MHz from sub-band edge 4G: 50 dBc @ 1 MHz from sub-band edge	50 dBc @ 1 MHz from sub-band edge
Power Consumption		< 160 W	110 W	< 130 W

Environmental Specifications

Operating Temperature	14° - 122° F (-10°-50° C)
Relative Humidity	5-90% non condensing

Mechanical Specifications

Dimension (W x H x D)	Chassis	19.0 x 14.0 x 19.1 in (482.0 x 356.0 x 485.2 mm)
	Module	4.2 x 11.6 x 18.2 in (107.3 x 296.0 x 461.8 mm)
	SDR-NMS	17.0 x 2.3 x 16.7 in (430.7 x 59.5 x 423.0 mm)
Weight	Chassis	26 lbs (11.7 kg)
	Module	21 lbs (9.5 kg)
	SDR-NMS	7 lbs (3.2 kg)
AC Power		110 - 130V AC, 60 Hz (Default) or 210-240V AC, 60 Hz (Selectable Switch)
Network Management	Local	RJ45 (Ethernet)
	Remote	Web-GUI, SNMP, SNMP-Traps (External Wireless Modem Required)
RF Connector		N-Type Female
Weather Resistance		IP20

Web www.adrftech.com

Tel +1 818.840.8131 Fax +1 818.840.8138

Technical/Customer Support +1 800.313.9345

3116 West Vanowen Street Burbank, CA 91505

Copyright © 2020 Advanced RF Technologies, Inc. All rights reserved. ADRF_SDR_NMS_SS / August 2020



TL9000

